

Veebeam Compatibility Tool User Guide

Use these instructions to
test whether your PC is
compatible with Veebeam

United Kingdom
Betjeman House
104 Hills Road
Cambridge
CB2 1LQ, UK

United States
1469 Rollins Road
Burlingame, CA
94010, USA

1 Introduction

The Veebeam Compatibility Tool allows you to test whether the performance of your Windows Laptop will be sufficient for use with Veebeam. Although the tool has been designed to provide a high level of certainty that the Veebeam product will work on Laptops which pass it's tests, it should be noted that the tool is an estimate and, under certain circumstances, results from the tool and the actual performance of Veebeam vary.

Note: The tool only runs under the Windows operating systems (Windows 7, Vista or XP).

In addition to the performance your Laptop, please note the following Veebeam requirements:

- Veebeam's wireless technology is designed for a maximum distance of around 10 yards (approx. 10 meters).
- Veebeam's wireless technology performs best when it has unobstructed 'line-of-sight' between the USB antenna and Veebeam box.

Use through walls, behind TVs, etc. or where the Laptop is more than 10 yards (meters) from the Veebeam box may result in poor video/audio quality.

2 Download the compatibility tool

Using the same Laptop that you plan to use with Veebeam, access the Veebeam website at www.veebeam.com. Then download the compatibility tool from the **Support** and then **Downloads** section.

Depending on the web browser you are using to access the internet, you may be prompted to either **Run** or **Save** the file. If so, click on **Run**.

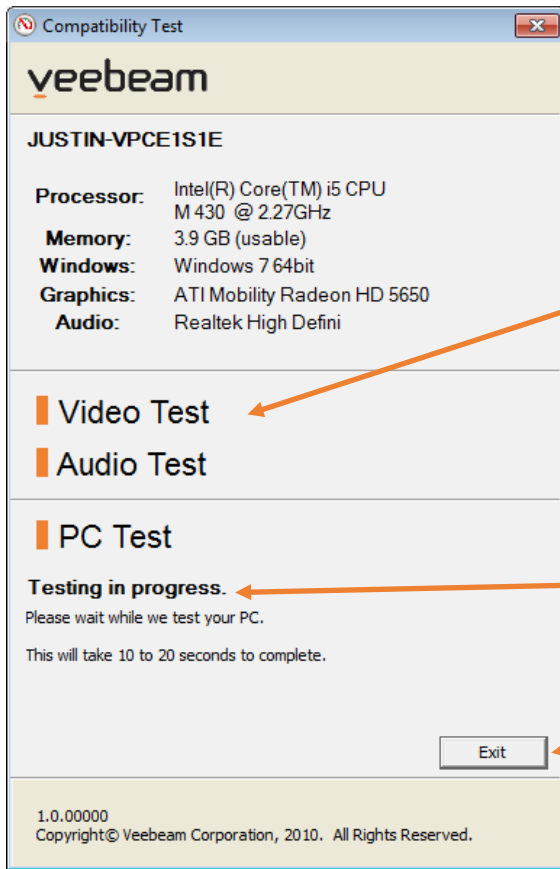
3 Running the compatibility tool

The following screen is displayed while the tests are carried out on your PC.

The display gives information about the Laptop:

- Processor – the processor operating the laptop
- Memory – the amount of installed/usable memory
- Windows – the version of Windows running on your PC

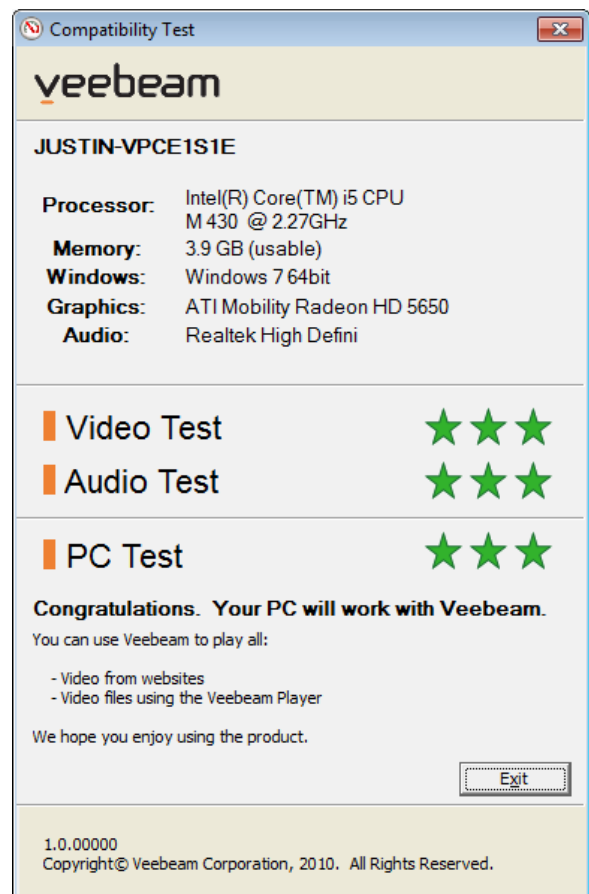
- Graphics – the graphics processor used on your PC
- Audio – the audio processor used on your PC



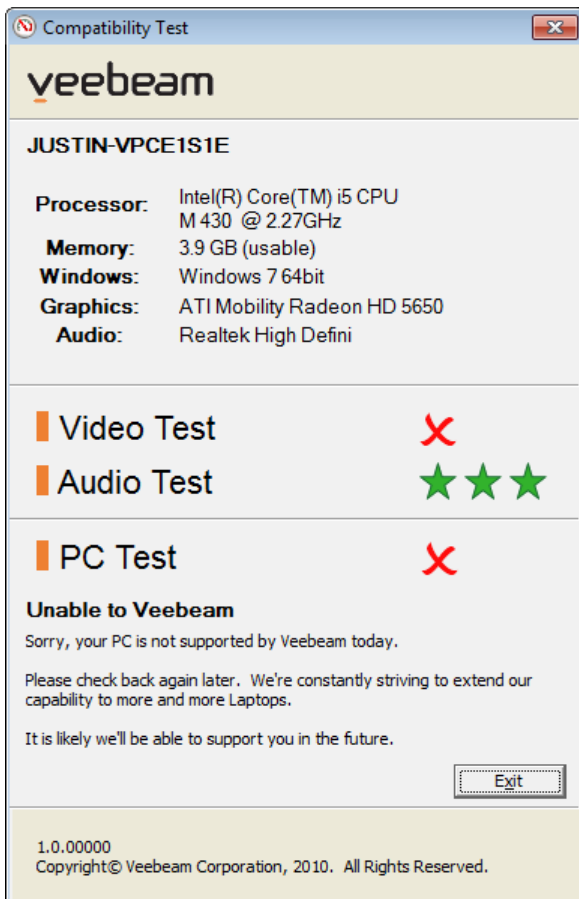
Tests in progress

Status Message

Exit Button



As each test is completed a green stars or a red cross will be displayed to indicate success or failure. If all three tests (Video, Audio and PC) pass and three green stars are displayed, the status message "Your PC will work with Veebeam" is displayed and you may close the program by clicking on the **Exit** button.



If any of the tests fail a red cross is displayed beside the test which has failed. The status message will indicate the failure.

To close the program click on the **Exit** button.

4 Understanding the tool results

In addition to a simple pass/fail result, the tool will provide you with a star rating system for each area indicating the certainty with which you should be able to get acceptable performance from Veebeam. The more green stars, the higher the certainty. In addition, the text at the bottom of the window should provide you with more information in the case where there may be limitations.

4.1 What's tested

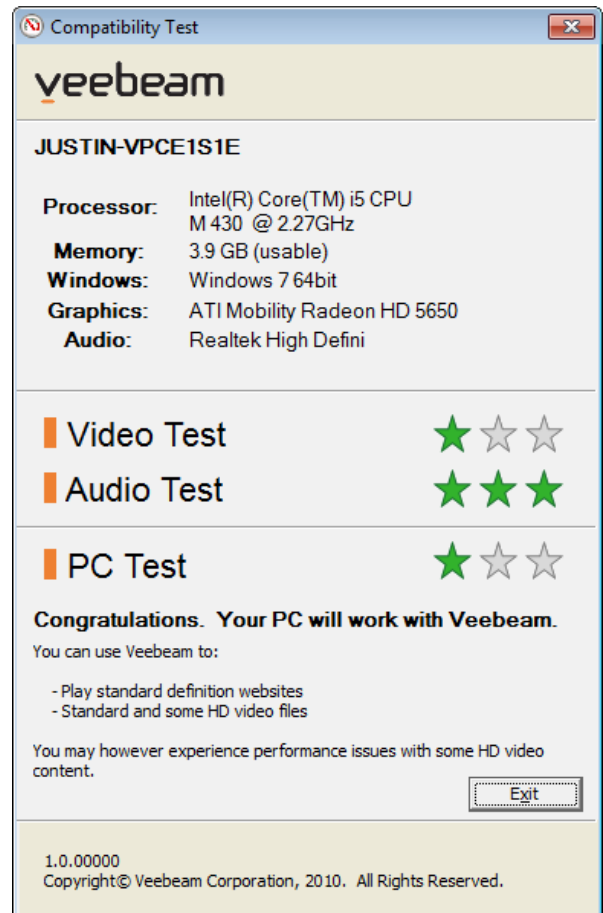
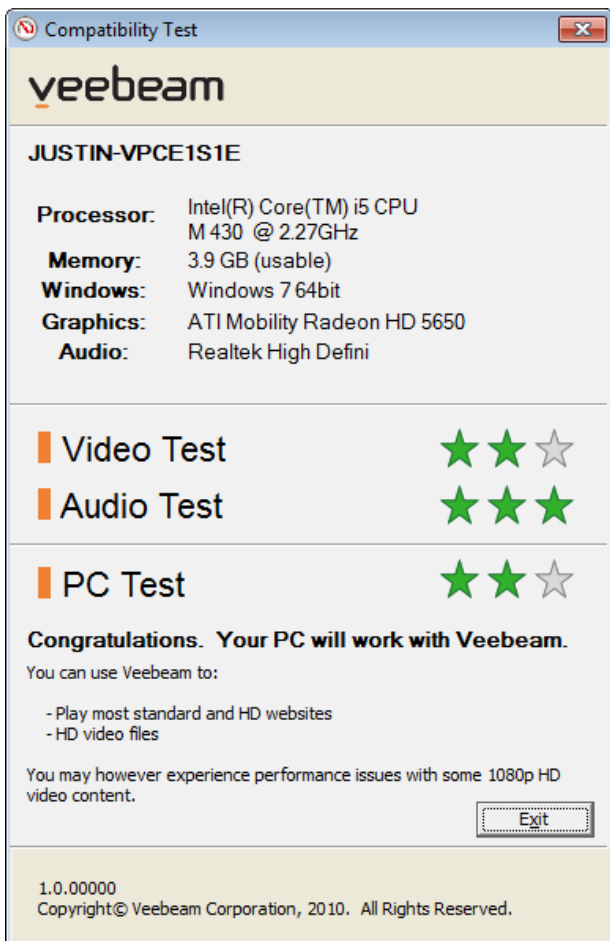
A PC can fail for numerous reasons. Below provides a brief explanation of the areas tested

- Video Test – tests that the PC has enough overall graphics processing power for Veebeam to be able to reproduce videos on the TV
- Audio Test – tests that the PC's audio is compatible with Veebeam's audio driver
- PC Test – tests that the overall specification for the PC (e.g. processor speed, memory, etc.) meets Veebeam's minimum requirements for reproducing videos on the TV

4.2 Example results

Some examples of results you may get are below.

This example shows a PC which has reduced CPU/GPU processing power. It should be capable of using Veebeam with low intensity videos (e.g. Standard Definition) but may not provide acceptable video quality with High Definition content.



In this example, the CPU/GPU performance is better than the previous example but may still experience some video quality issues on some high intensity content.